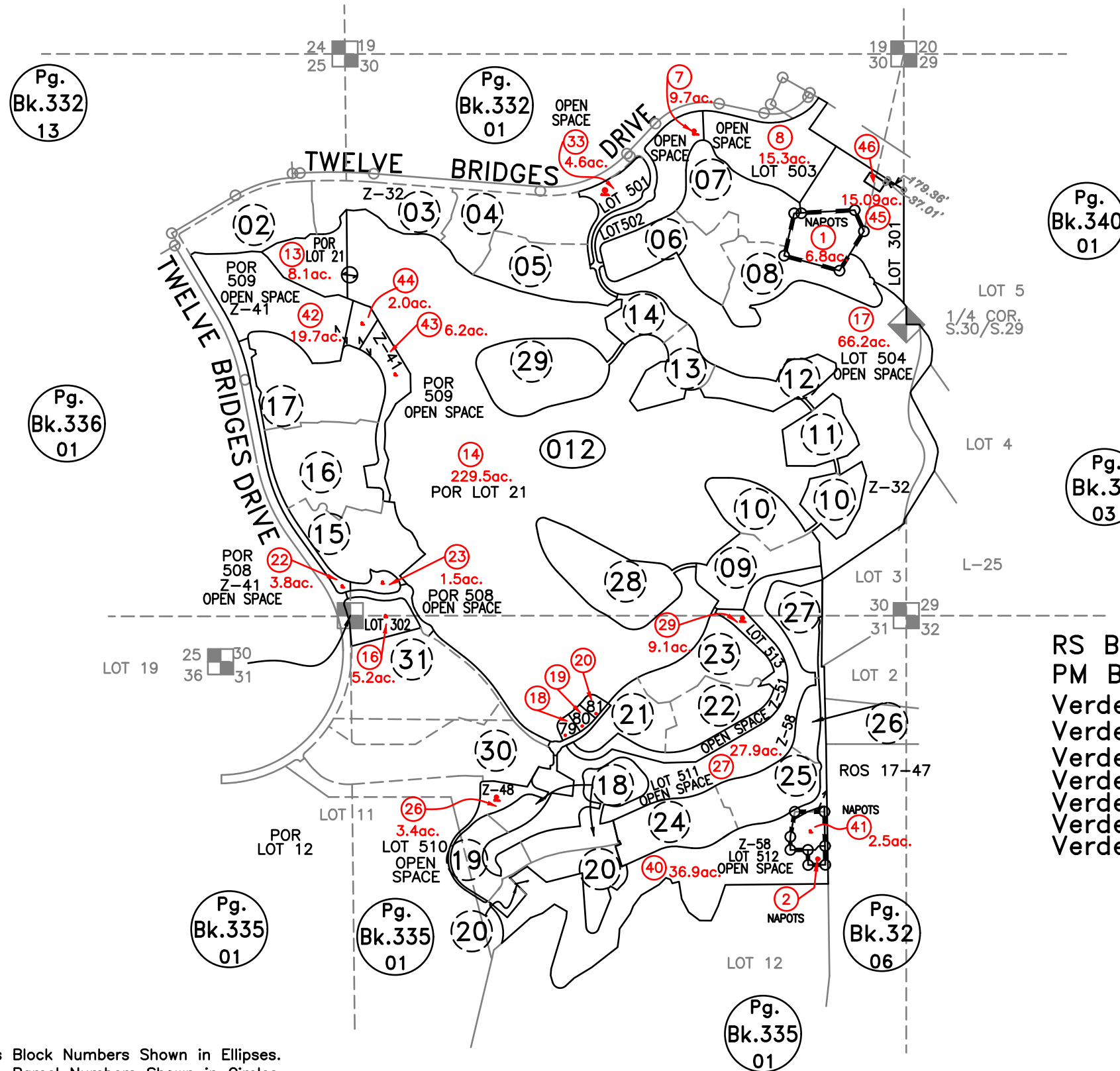
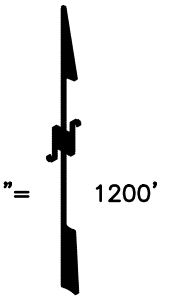


POR. SEC.25 & 36, T.12N., R.6E., M.D.B.&M.  
 POR. SEC. 30 & 31, T.12N., R.7E., M.D.B.&M.  
 Twelve Bridges Large Lot Subdivision, Bk. V, Pg. 31



- RS Bk.17, Pg.47
- PM Bk. 31, Pg. 34 (Twelve Bridges)
- Verdera Large Lot Subd., Bk. Z, Pg. 32
- Verdera Village 13-Ph.1, Bk. Z, Pg. 36
- Verdera Village 20, Bk. Z, Pg. 41
- Verdera Village 14-Ph.1, Bk. Z, Pg. 45
- Verdera Village 13-Ph.2, Bk. Z, Pg. 48
- Verdera Village 14-Ph.2, Bk. Z, Pg. 51
- Verdera Village 13-Ph.3, Bk. Z, Pg. 58

NOTE  
 Assessor's Block Numbers Shown in Ellipses.  
 Assessor's Parcel Numbers Shown in Circles.

Parcel split by Tax Rate Area line =   
 One Parcel, multiple APNs =   
 Portion of Original Lot =

NOTE  
 This map was prepared for assessment purposes only, and is not intended to illustrate legal building sites or establish precedence over local ordinances. Official information concerning size or use of any parcel should be obtained from recorded documents and local governing agencies.

NAPOTS=Not A Part Of This Subdivision

09-25-2023  
 11-19-2008  
 09-19-2007  
 12-15-2006  
 10-04-2006  
 03-01-2006  
 10-04-2005  
 08-08-2005  
 02-09-2005  
 02-02-2005  
 09-23-2004  
 04-17-2004  
 02-25-2004  
 02-09-2004  
 02-02-2004  
 12-31-2003  
 06-09-2003  
 04-28-2003  
 12-06-2002  
 02-26-2002  
 11-14-2001  
 11-06-2000  
 11-10-99 JAC  
 Formerly 032-010-025-30, 033, & POR.16 & 24-000, 021-290-043, & Por 057 & 056-000