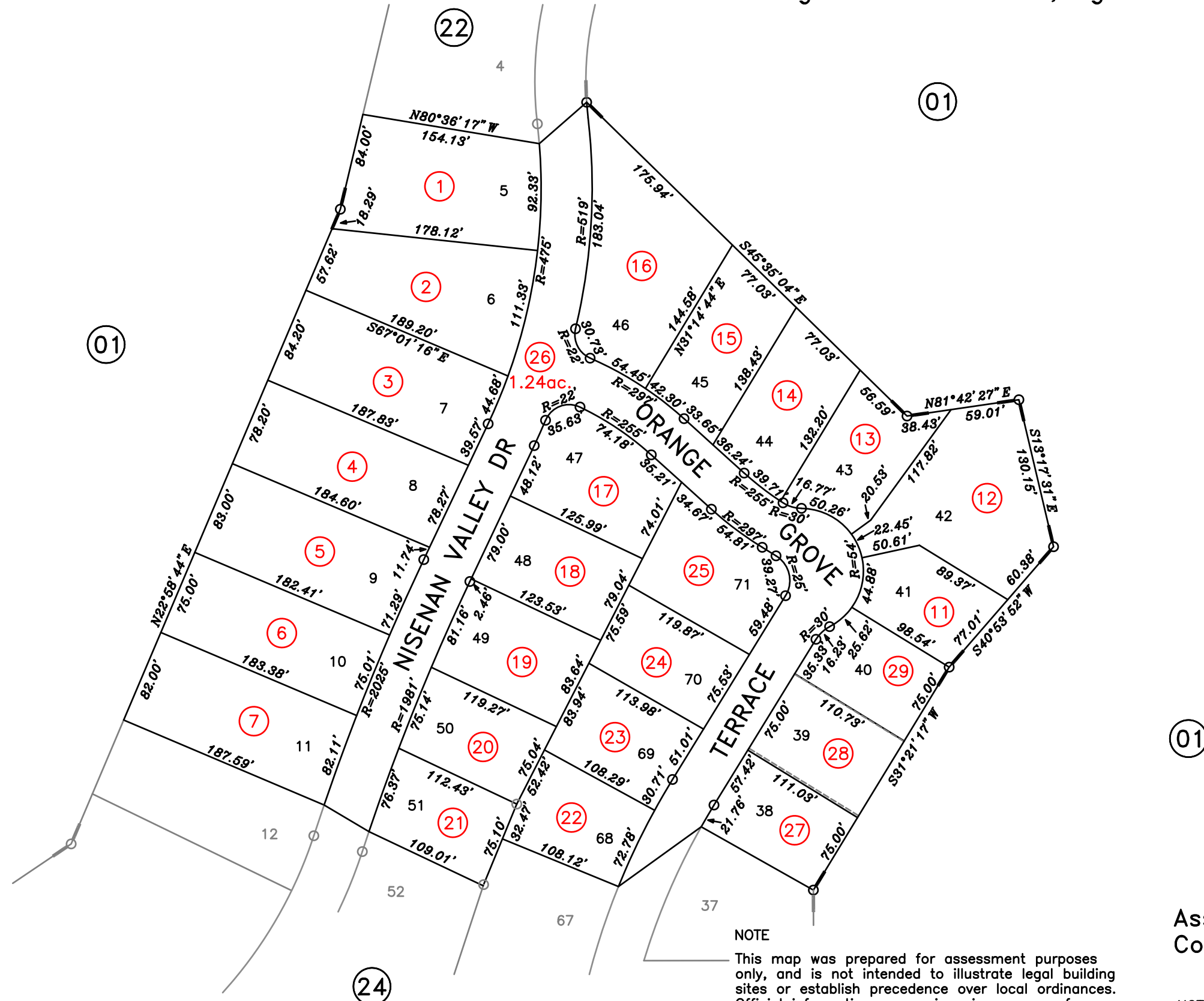
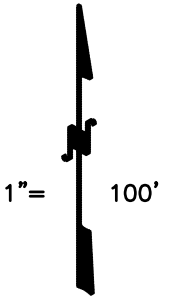


POR. SEC.31, T.12N., R.7E., M.D.B.&M.

335-23

Education Foundation ~ Twelve Bridges, Lot 1 M.O.R. Bk. AA, Pg. 58

Education Foundation ~ Twelve Bridges M.O.R. Bk. EE, Pg. 70



NOTE

This map was prepared for assessment purposes only, and is not intended to illustrate legal building sites or establish precedence over local ordinances. Official information concerning size or use of any parcel should be obtained from recorded documents and local governing agencies.

NOTE

All distances on curved lines are shown per recorded documentation

Assessor's Map Bk.335Pg.23
County of Placer, Calif.

NOTE

Assessor's Block Numbers Shown in Ellipses.
Assessor's Parcel Numbers Shown in Circles.