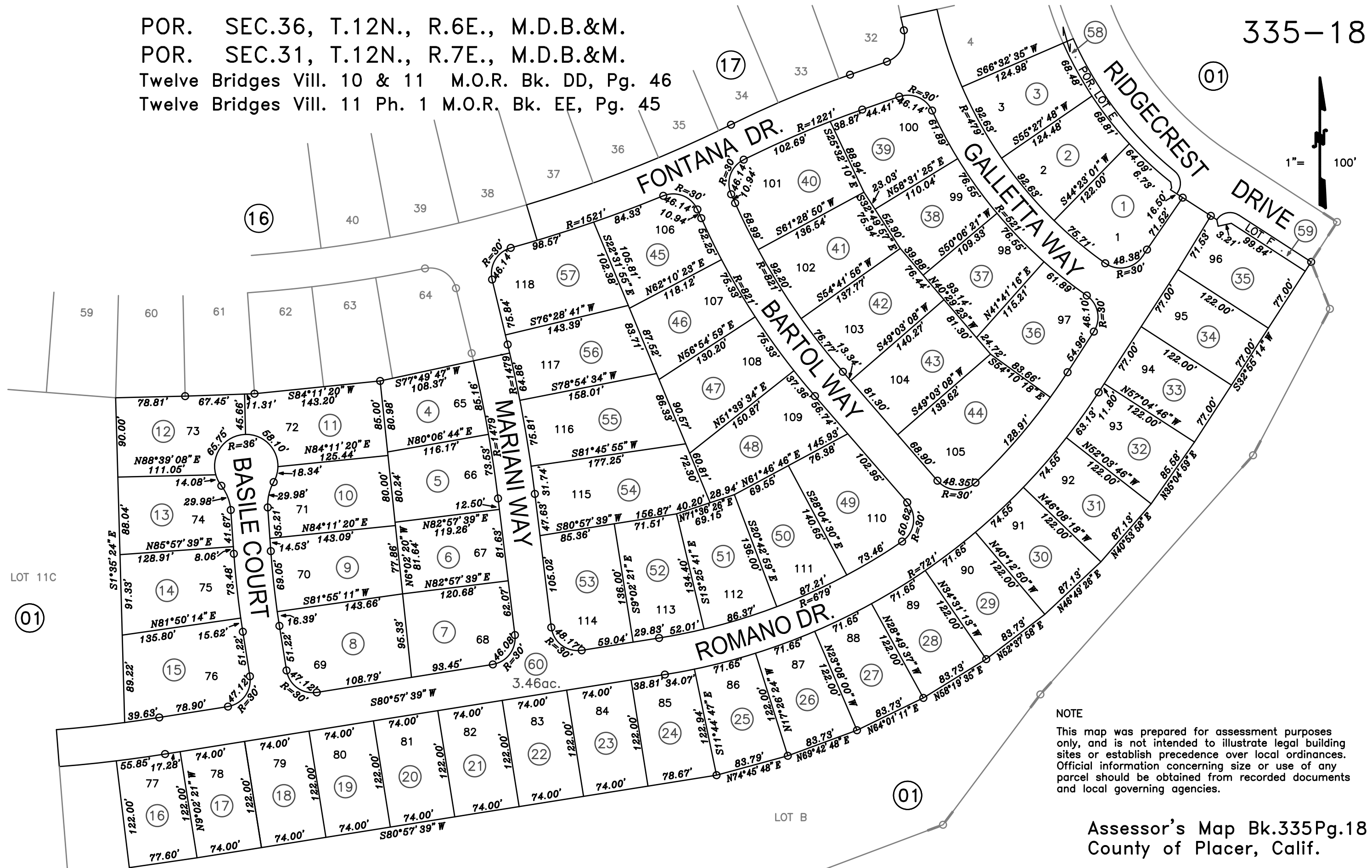


POR. SEC.36, T.12N., R.6E., M.D.B.&M.
 POR. SEC.31, T.12N., R.7E., M.D.B.&M.
 Twelve Bridges Vill. 10 & 11 M.O.R. Bk. DD, Pg. 46
 Twelve Bridges Vill. 11 Ph. 1 M.O.R. Bk. EE, Pg. 45



NOTE
 This map was prepared for assessment purposes only, and is not intended to illustrate legal building sites or establish precedence over local ordinances. Official information concerning size or use of any parcel should be obtained from recorded documents and local governing agencies.

Assessor's Map Bk.335Pg.18
 County of Placer, Calif.

06-27-2019 PQ
 Formerly Por. 335-010-033 & 045-000
 NOTE
 All distances on curved lines are shown per recorded documentation

NOTE
 Assessor's Block Numbers Shown in Ellipses.
 Assessor's Parcel Numbers Shown in Circles.