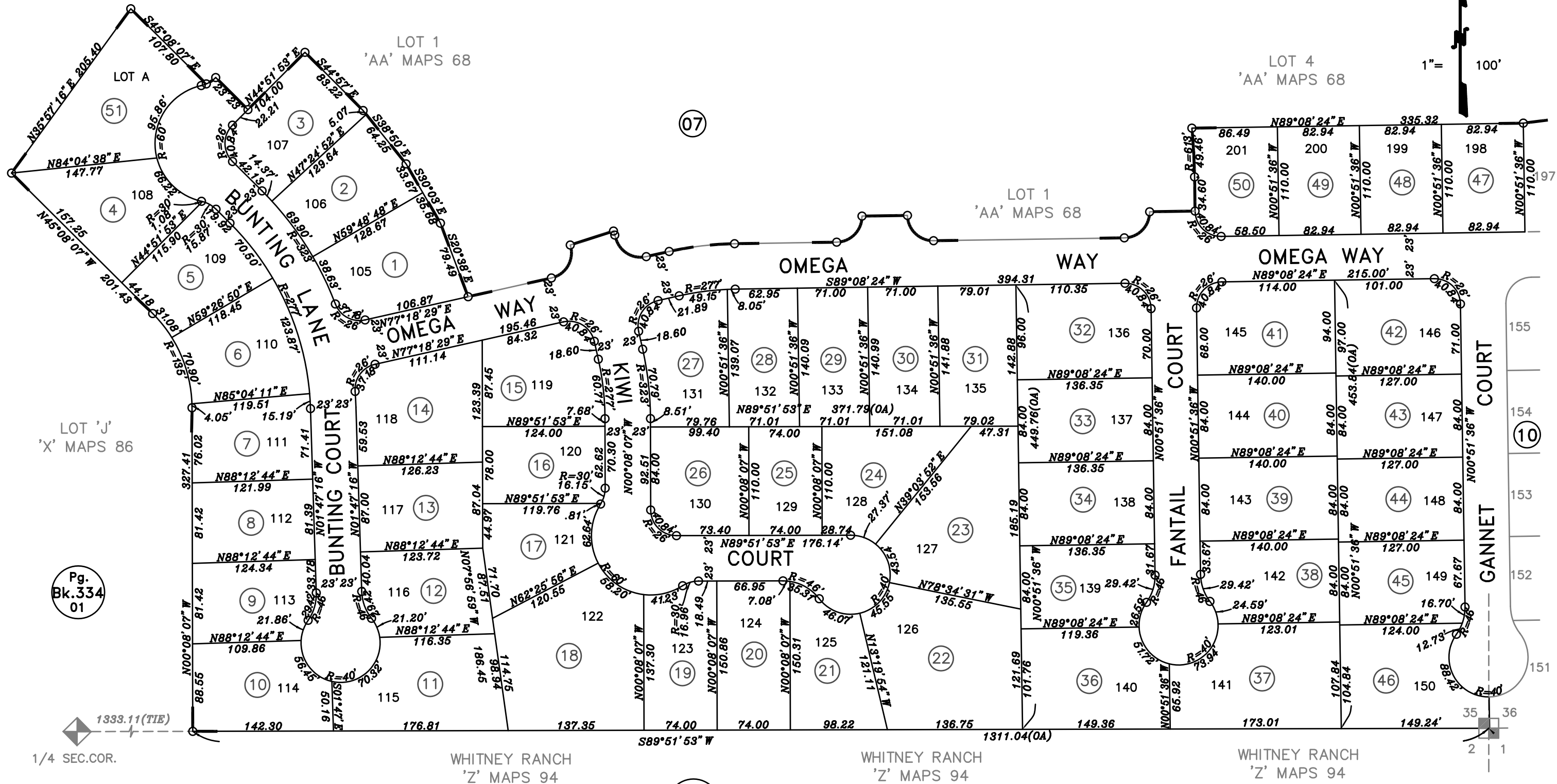


POR. OF SEC. 35 & 36, T.12 N., R.6 E., M.D.B.&M.

335-09

Twelve Bridges Village 9, Large Lot Subdivision, M.O.R. Bk. AA, Pg. 68  
 Twelve Bridges Village 9, Unit 2, M.O.R. Bk. AA, Pg. 73



Pg. Bk.334 01

Pg. Bk.17 18

Assessor's Map Bk.335Pg.09  
 County of Placer, Calif.

02-02-2006 RNP/GHM  
 Page Redrawn Electronically  
 Formerly Por 335-010-015-000

NOTE  
 All distances on curved lines are arc length measurements.

NOTE  
 This map was prepared for assessment purposes only, and is not intended to illustrate legal building sites or establish precedence over local ordinances. Official information concerning size or use of any parcel should be obtained from recorded documents and local governing agencies.

NOTE  
 Assessor's Block Numbers Shown in Ellipses.  
 Assessor's Parcel Numbers Shown in Circles.