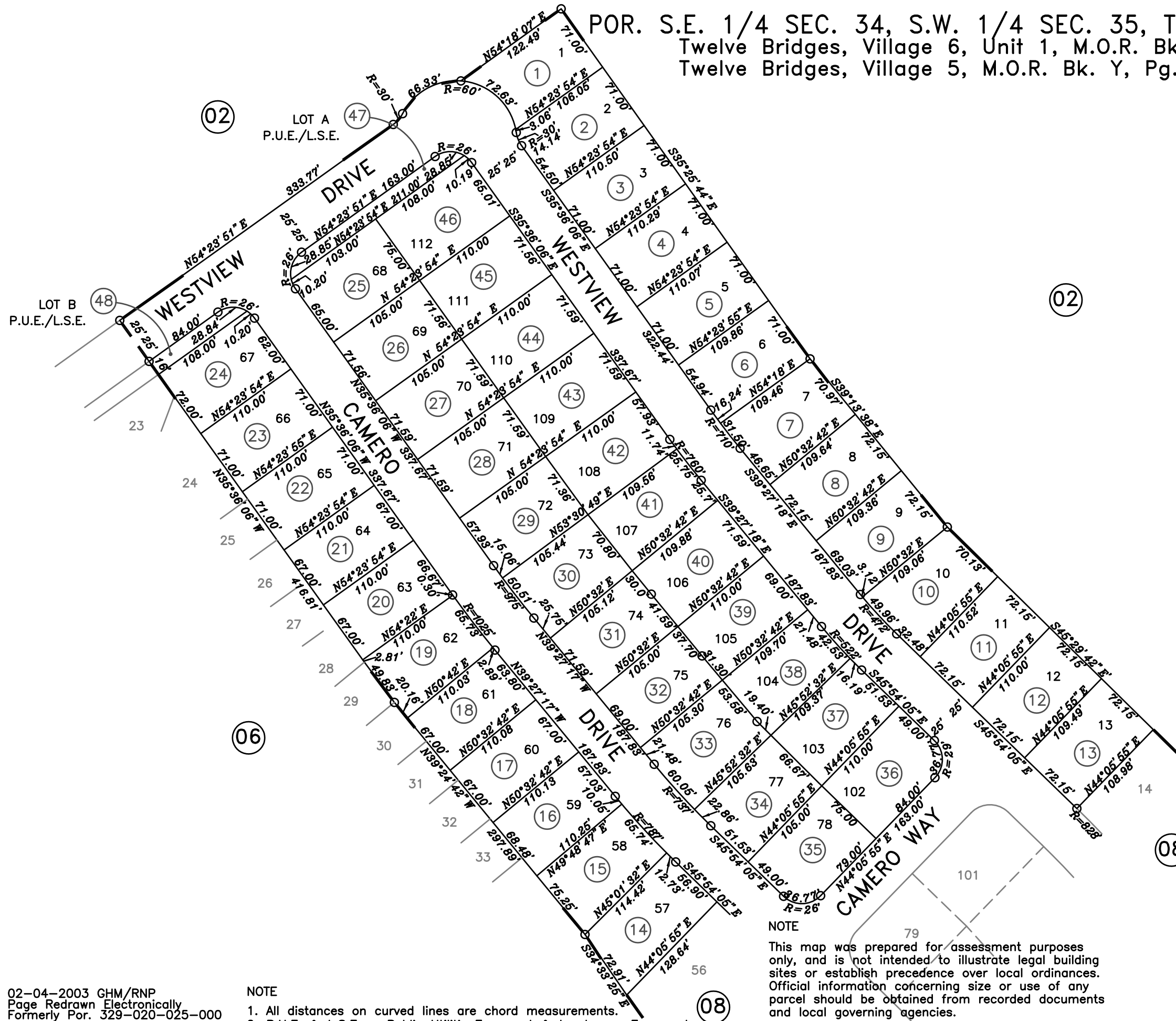
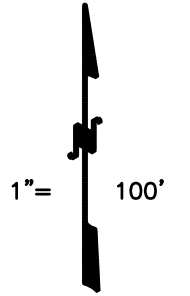


POR. S.E. 1/4 SEC. 34, S.W. 1/4 SEC. 35, T.12N., R.6E., M.D.B.&M.  
 Twelve Bridges, Village 6, Unit 1, M.O.R. Bk. Y, Pg. 8  
 Twelve Bridges, Village 5, M.O.R. Bk. Y, Pg. 28

329-07



NOTE  
 This map was prepared for assessment purposes only, and is not intended to illustrate legal building sites or establish precedence over local ordinances. Official information concerning size or use of any parcel should be obtained from recorded documents and local governing agencies.

Assessor's Map Bk.329Pg.07  
 County of Placer, Calif.

NOTE  
 Assessor's Block Numbers Shown in Ellipses.  
 Assessor's Parcel Numbers Shown in Circles.

02-04-2003 GHM/RNP  
 Page Redrawn Electronically  
 Formerly Por. 329-020-025-000

NOTE  
 1. All distances on curved lines are chord measurements.  
 2. P.U.E. & L.S.E. = Public Utility Easement & Landscape Easement