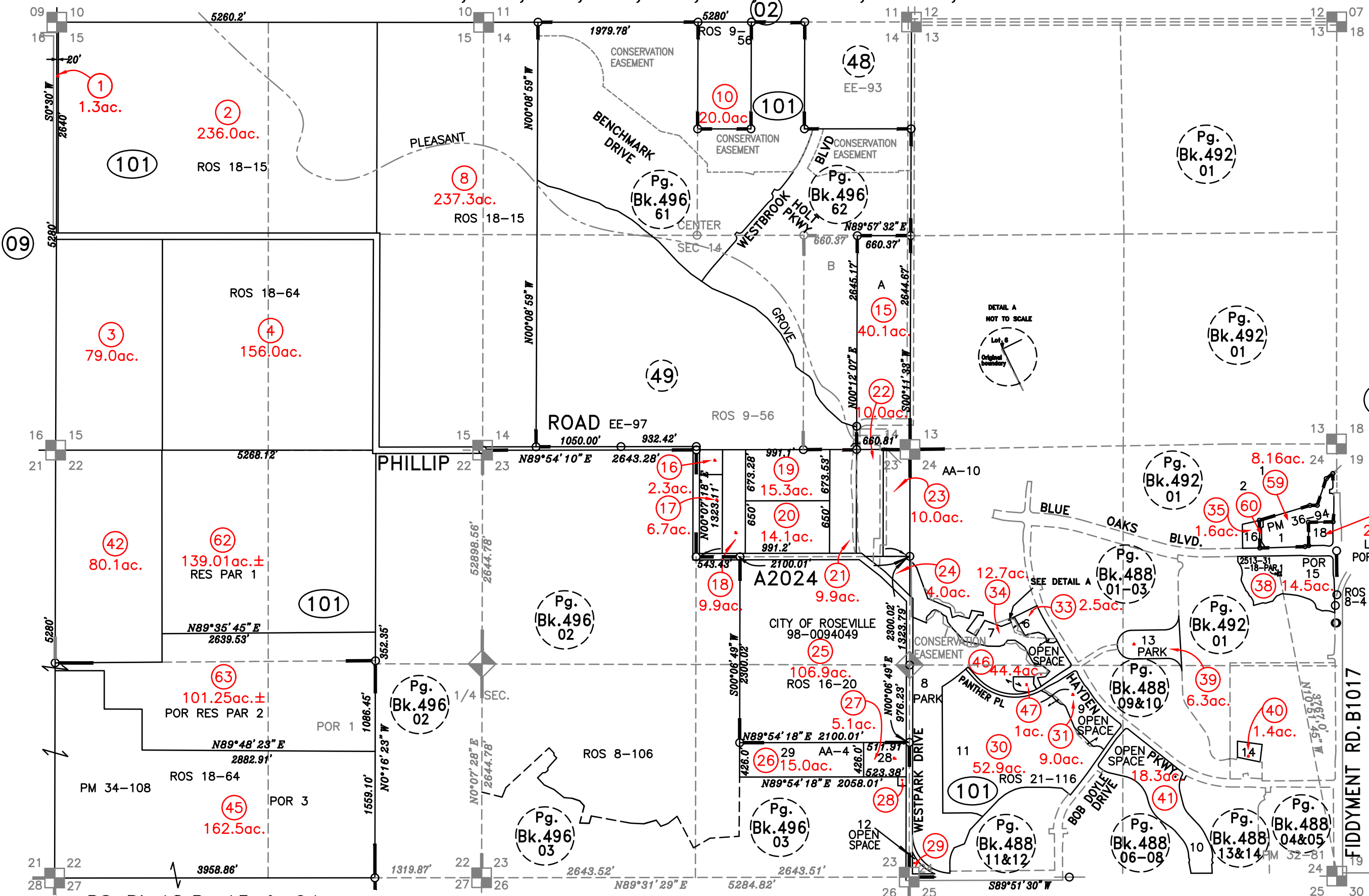


1" = 1200'



08-10-2023  
 08-09-2023  
 06-27-2023  
 01-31-2022  
 10-23-2020  
 08-03-2020  
 10-03-2019  
 03-23-2015  
 03-09-2015  
 11-05-2014  
 02-08-2012  
 08-13-2008  
 08-11-2008  
 02-08-2007  
 01-16-2007  
 01-15-2007  
 01-09-2007  
 11-02-2007  
 11-16-2006  
 10-16-2006  
 08-02-2006  
 04-05-2006  
 03-20-2006  
 10-13-2005  
 08-22-2005  
 03-08-2005  
 01-10-2005  
 12-09-2004  
 03-10-99 SKS  
 Page Redrawn per Basemap information.

RS Bk.18, Pg.15 & 64  
 RS Bk.21, Pg.116  
 PM Bk.34, Pg.108  
 Westpark Ph.1, Bk.AA, Pg.4  
 Creekview Ph.1, Bk.EE, Pg.97  
 Fiddymt Ranch Ph.1, Bk.AA, Pg.10  
 PM Bk.36, Pg.94

RS Bk.1, Pg.15  
 RS Bk.8, Pgs.4&106  
 RS Bk.9, Pg.56  
 RS Bk.12, Pg.99  
 RS Bk.16, Pg.20  
 PM Bk.17, Pg.102  
 Westpark Phase 1 Large Lot Subd.  
 PM Bk. 32, Pg. 81

NOTE  
 Assessor's Block Numbers Shown in Ellipses.  
 Assessor's Parcel Numbers Shown in Circles.

Parcel split by Tax Rate Area line =   
 One Parcel, multiple APNs =   
 Portion of Original Lot =

NOTE  
 This map was prepared for assessment purposes only, and is not intended to illustrate legal building sites or establish precedence over local ordinances. Official information concerning size or use of any parcel should be obtained from recorded documents and local governing agencies.